



TECHNICAL RELEASE NOTES

September 2013

Index

Dapresy Pro 8.3	1
Technical Release Notes	1
1 Introduction.....	4
2 Storyteller reporting improvements.....	5
2.1 Cell formatting support in Storyteller tables	5
2.1.1 Setup	5
2.2 Support of hiding/warning for low base size in Storyteller tables.....	6
2.2.1 Setup - Hide series	7
2.2.2 Setup - Warn for low base	8
2.3 Storyteller tables supported in the A4 Excel layout format	8
2.3.1 Setup	8
2.4 Cell formatting improvements - turn legend on/off.....	9
2.4.1 Setup	9
2.5 Improved Top/Bottom X series in Storyteller charts and tables	10
2.5.1 Setup	10
2.6 New support for deriving Top/Bottom x values from multiple series	10
2.6.1 Setup	12
3 Action Plan updates.....	13
3.1 Setup	13
4 Mobile devices support	14
4.1.1 Setup	14
5 General report improvements.....	15
5.1 Presentation mode	15
5.1.1 Setup	16
5.2 ImpRoved culture Support in Crosstable tool - Default separator	16
5.2.1 Setup	16
6 General Administration updates	17
6.1 New improved sorting in Answer blocks	17

6.2 Time out settings – support for infinite time limit..... 17

1 INTRODUCTION

This document describes new and improved features in Dapresy Pro version 8.3.

- Chapter 2 describes Storyteller reporting improvements
- Chapter 3 describes Action Plan improvement
- Chapter 4 describes improved support for using Dapresy Pro in mobile devices
- Chapter 5 describes general reporting improvements
- Chapter 6 describes general project administration improvements
- Chapter 7 describes the new seamless integration to four different data collection tools

If you want to know more about these features please contact Dapresy Global Support at: support@dapresy.com and they will be able to assist you.

Best Regards,

Dapresy Team 2013

Email: support@dapresy.com

Telephone: + 46 (0)76 019 89 42

2 STORYTELLER REPORTING IMPROVEMENTS

The following improvements have been done in the Storyteller, each of them is described in detail in the following chapters.

- Cell formatting support in Storyteller tables
- Support for hiding/warning for low base size in Storyteller tables
- A4 layout is now supported in Storyteller tables
- Cell formatting improvements - turn legend on/off
- Improved Top/Bottom X series in charts and tables
- New support for deriving Top/Bottom x values from multiple series

2.1 CELL FORMATTING SUPPORT IN STORYTELLER TABLES

The Storyteller table module now supports the cell formatting feature that is present in the Cross table module. By using this feature the results can be formatted based on defined threshold values which makes it easier to see relevant differences in result.

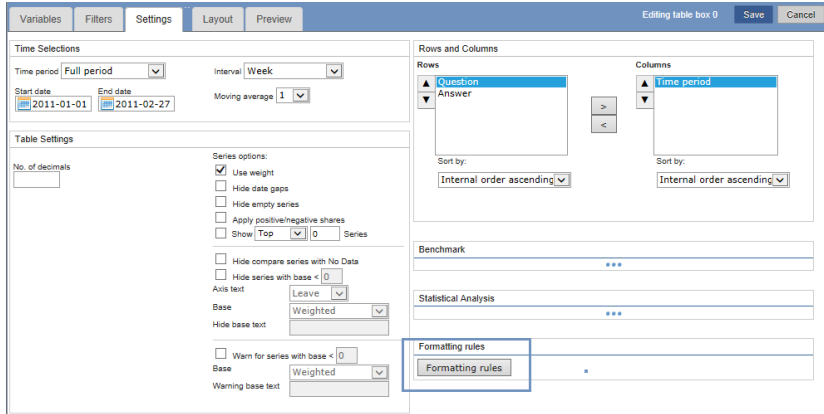
The image below shows an example where the cell formatting has been used to highlight values which are 10 % greater than the previous month.

	2010-52	2011-01	2011-02	2011-03	2011-04	2011-05	2011-06	2011-07	2011-08
Shop A	78%	100%	93%	89%	92%	69%	94%	88%	89%
Shop B	100%	58%	43%	33%	52%	55%	52%	47%	54%
Shop C	22%	71%	43%	48%	55%	37%	29%	83%	33%
Shop D	50%	25%	57%	47%	46%	46%	37%	71%	43%
Shop E	50%	53%	85%	67%	66%	57%	54%	65%	37%
Shop F	0%	54%	59%	54%	66%	32%	42%	42%	47%
Shop G	100%	78%	88%	61%	65%	91%	70%	82%	86%

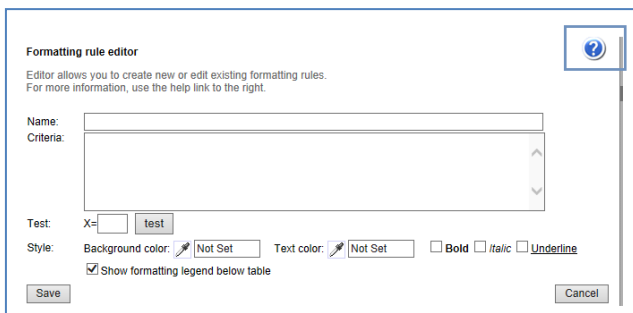
2.1.1 SETUP

The setup logic of the cell formatting works like it does in the Cross table module. Accessing the cell formatting window is in the Settings tab as shown in the first image below. When clicking the button a new window appears where the rules are being defined. For each rule a threshold limit is defined along with the layout behavior.

Tip: In the window for creating the cell formatting rules you can download a Help document which contains guidelines for creating the formulas. You will find the "Help" link in the top right corner of the page, see the second image below.



The image below shows the link to the Help document.



2.2 SUPPORT OF HIDING/WARNING FOR LOW BASE SIZE IN STORYTELLER TABLES

Support for hiding results with low base size or warn when the base is too low has been implemented in Storyteller table, the function was already supported in Storyteller Charts and in the Cross Table module. The new feature makes it possible to report for instance Employee and Customer Satisfaction results in the Storyteller Tables where anonymity rules are crucial.

Below two example images are shown, as you see an information text is shown in the bottom of the table which either warns for a low base or informs that some results have been hidden due to a low base size.

In the first example table below, results with a low base size have been hidden and in the second table below results with a low base size are shown with a warning.

	15-24	25-34	35-44	45-54	55-64	65 +
Dapresy Telecom	-	33%	35%	-	-	-
Four	-	5%	6%	-	-	-
Swedish Telecom	-	1%	7%	-	-	-
Sweet Talk	-	18%	12%	-	-	-

Some results have been hidden due to low base

	15-24 *	25-34	35-44	45-54 *	55-64 *	65 + *
Dapresy Telecom	29%	33%	35%	27%	25%	32%
Four	5%	5%	6%	5%	4%	6%
Swedish Telecom	11%	1%	7%	9%	6%	6%
Sweet Talk	9%	18%	12%	13%	15%	10%

*Note: Low base size

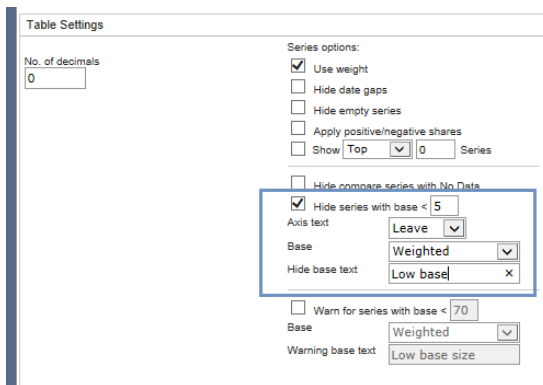
Both Warn and Hide can be used at the same time, for instance results with a base size less than 5 can be hidden and result with a base between 5 and 10 can be shown but with a warning for low base. The limits are freely defined during the setup and can be based on weighted or un-weighted respondent counts.

2.2.1 SETUP - HIDE SERIES

The settings for hiding results (series) with a low base are done on a table level. In the setup the following selections must be done:

1. The respondent limit
2. Select if the limit should be based on Weighted or un-weighted respondent count
3. Define if the column text of the hidden series should remain or be removed (see example images below)
4. Enter an information text to show in the bottom of the table, the text is only shown when at least one series has been hidden.

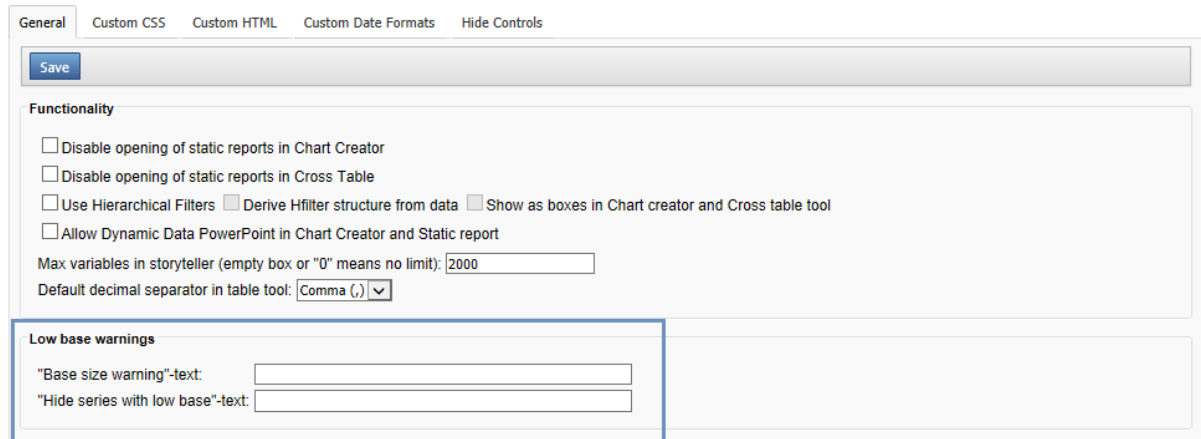
The image below shows the setup controls in the Settings Tab.



Note; a default “Hide base text” can be defined in the Project settings page, the text entered in the Base size warning text field in the Project settings page will be default when setting up a new table. The text can be changed per table during the setup.

The image below highlights the default text in the Project settings page.

Project Settings

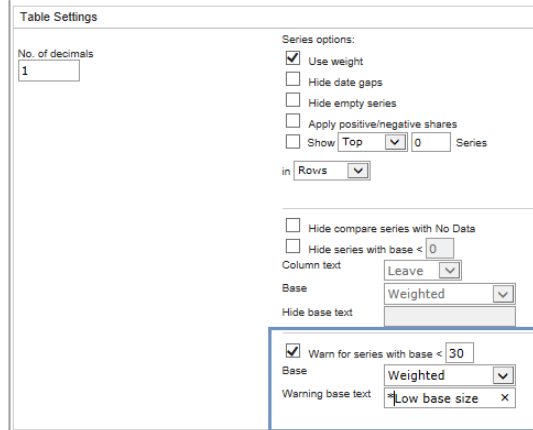


2.2.2 SETUP - WARN FOR LOW BASE

The warning settings for low base sizes are done on a table level. In the setup the following selections must be done:

1. The respondent limit.
2. Select if the limit should be based on weighted or un-weighted respondent count
3. Enter an information text to show in the bottom of the table, the text is only shown when at least on series has a low base.

The image below shows the setup controls in the Settings Tab.



The screenshot shows the 'Table Settings' dialog box. The 'No. of decimals' is set to 1. Under 'Series options', 'Use weight' is checked, and 'Show' is set to 'Top' with a value of 0. The 'Warn for series with base < 30' checkbox is checked. The 'Base' dropdown is set to 'Weighted'. The 'Warning base text' field contains '*Low base size'.

Note; a default “Warn base text” can be defined in the Project settings page. The default text will be used in all new tables, unless it is edited in the table setup.

The series with low base are indicated with an * in the tables as shown in the example images above. The * is shown in different positions depending on the content in the table.

2.3 STORYTELLER TABLES SUPPORTED IN THE A4 EXCEL LAYOUT FORMAT

The default Storyteller document format is based on the standard PowerPoint slide size but two additional Storytellers format do exists which can be used for making table reports, A4 portrait and A4 landscape. The previous version of the A4 reports did only support Cross Tables but now it does support the Storyteller tables as well.

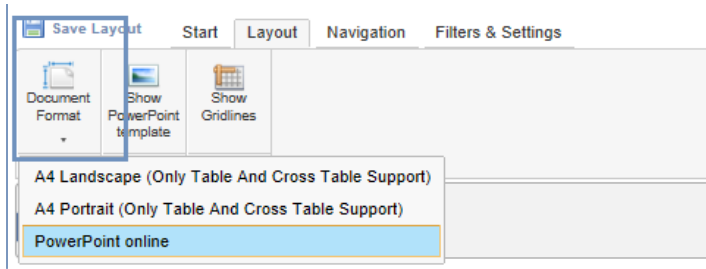
The A4 format is perfect to use when creating table appendixes where a huge amount of results should be possible to export to Excel.

Note: Reports using the A4 format reports can only be exported to Excel and not to PowerPoint.

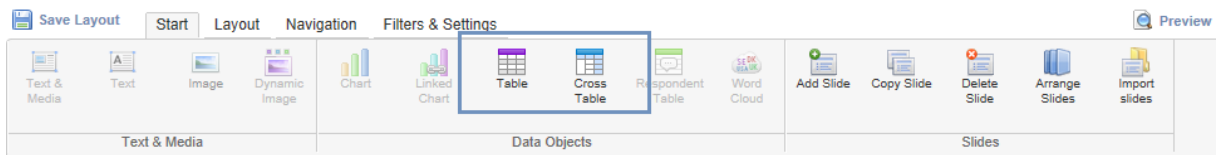
2.3.1 SETUP

No changes have been done in the setup, the only difference is that both the Cross table and the Table module are enabled when the A4 format is active.

The image below shows the settings for changing document format from PowerPoint to A4.



The image below shows the modules that are available when the A4 document format is active.



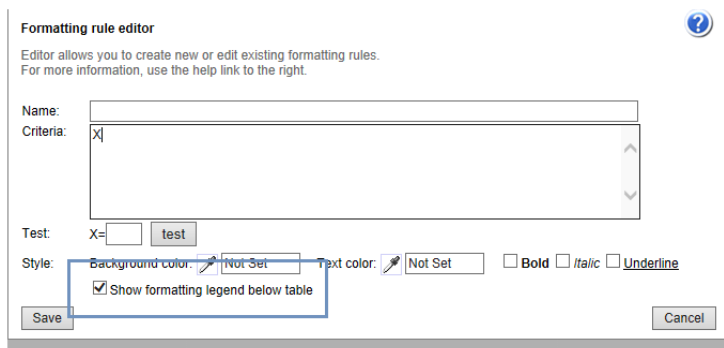
2.4 CELL FORMATTING IMPROVEMENTS - TURN LEGEND ON/OFF

A minor update has been done in the Cell formatting function. Support for turning the legend on/off has been added, in the previous version the legend was always shown. The improvement makes it easier to create nice looking layouts in dashboards and infographics slides. The new setting is present in both table modules used in Dapresy Pro (The Cross tables module and the Storyteller tables).

2.4.1 SETUP

The setting for turning the legend on/off is found in the cell formatting setup window as shown in the image below. The legend is shown as default so no changes will be done in any existing reports/layouts.

The image below shows the new setting.



2.5 IMPROVED TOP/BOTTOM X SERIES IN STORYTELLER CHARTS AND TABLES

The Top/Bottom X series feature in Storyteller charts and tables has been improved. In the previous version the Top/Bottom X series referred to the axis groupings in the charts and to the rows in the tables. A new setting makes it now possible to select if the Top/Bottom should refer to the Row/Axis or to the Legend/Columns.

The new settings allows a more dynamic layout, for instance a top list table can be shown either horizontally or vertically as shown in the image below, in the previous version this kind of top lists could only be shown vertically.

The image below shows two example of a top list table, the first one shows the list horizontally and the other one shows the list vertically.

Brand awareness Top 3 brands

Dapresy Telecom	Sweet Talk	Tel Me More
30%	13%	9%

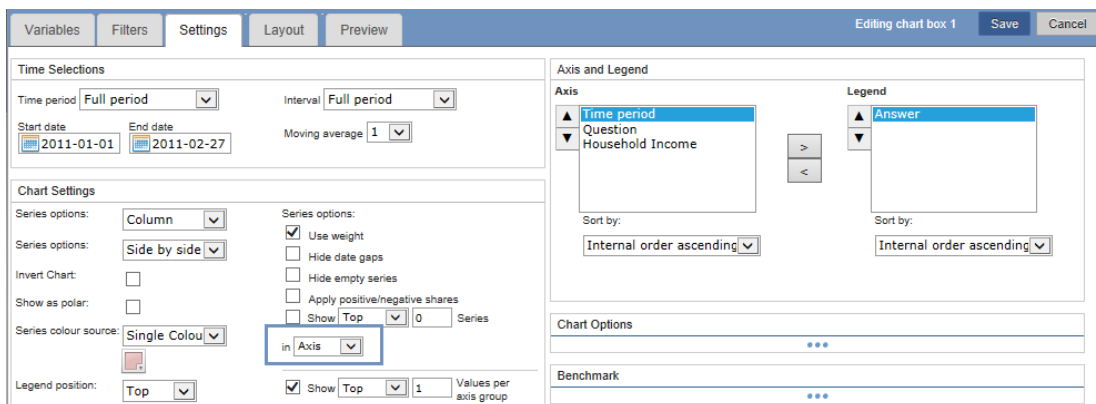
Brand awareness Top 3 brands

Dapresy Telecom	30%
Sweet Talk	13%
Tel Me More	9%

2.5.1 SETUP

A new selection has been added to the existing “Show top X series” feature, as shown in the image below. The Administrator selects rows or columns in the table setup and axis or legend in the chart setup.

The image below shows the new controls.

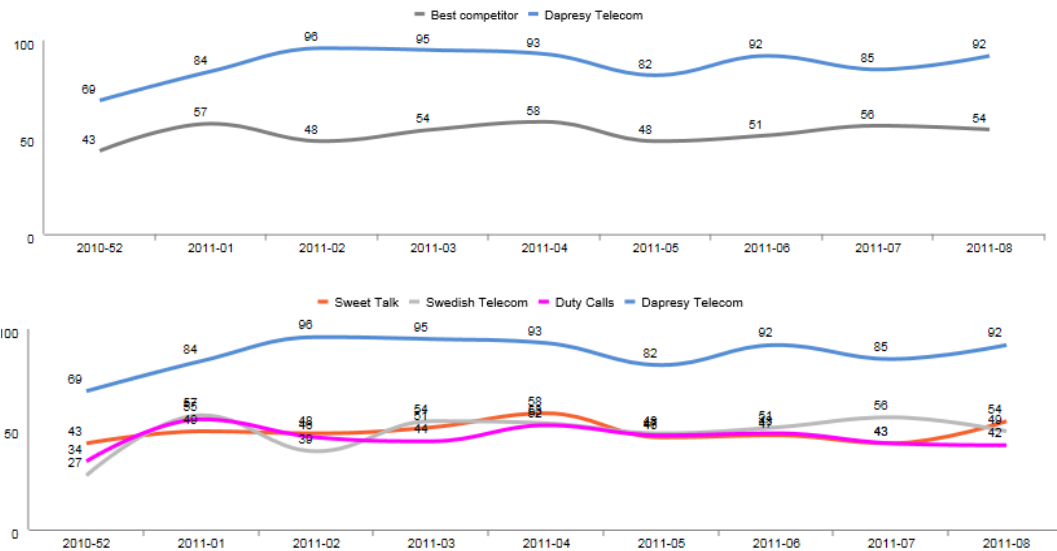


2.6 NEW SUPPORT FOR DERIVING TOP/BOTTOM X VALUES FROM MULTIPLE SERIES

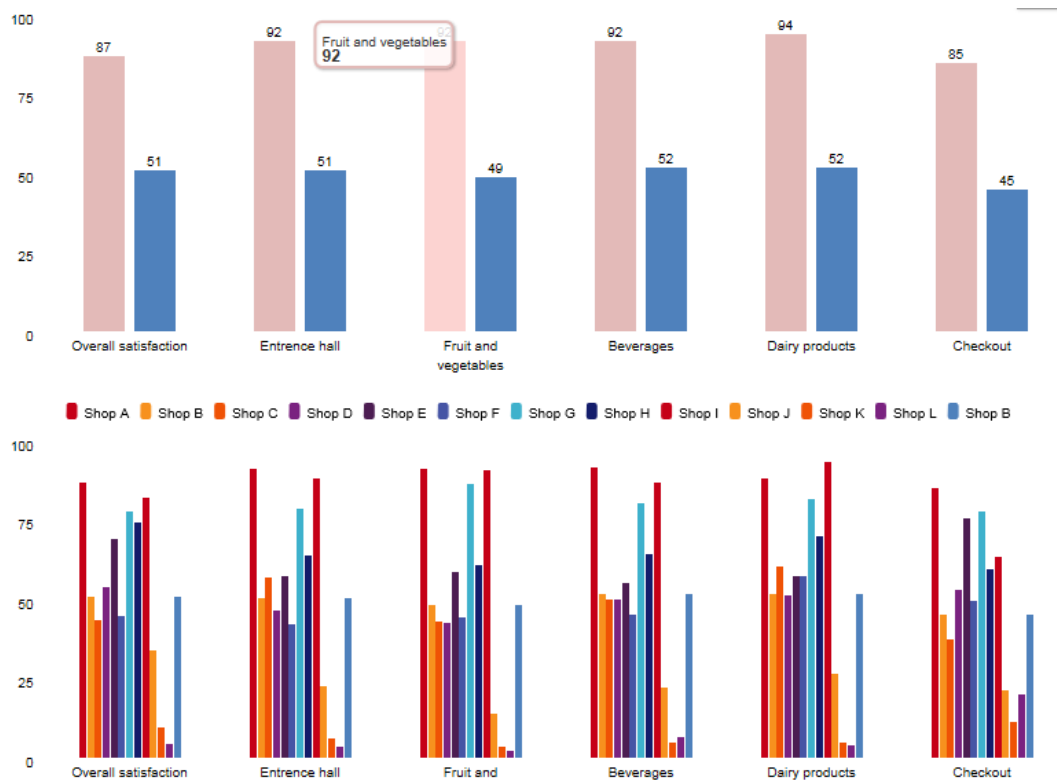
A new feature for deriving the highest value from multiple series and binding those to a new series has been added. The feature increases the benchmark and comparison possibilities in charts. It is for example possible to:

- in a brand tracker benchmark the brand of the client to each months best competitor (see the first image below)
- in a customer satisfaction survey compare a unit in against the best unit in the company.

The first chart below shows the result from a brand tracker, the brand Dapresy Telecom is compared to the best competitor brand every month. As shown in the second chart below, which shows the original data, the best competitor brand can differ from month to month. The best competitor series is a mix of the grey and the orange series.



The first chart below shows an example from a client satisfaction survey where the result of a shop is compared to the best competitor shop within several KPI areas. As shown in the second chart below, which shows the original data, the best competitor shop can differ from month to month.



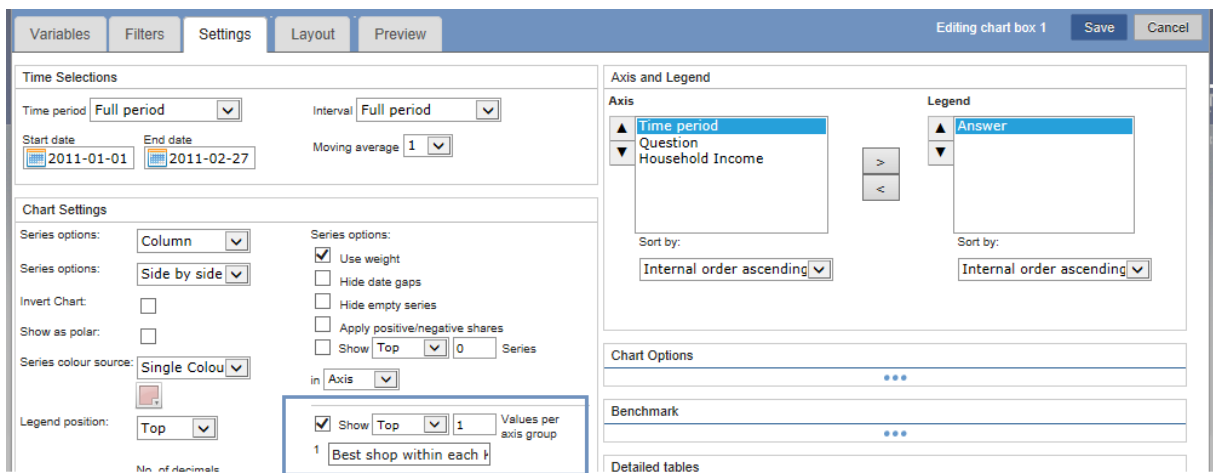
2.6.1 SETUP

The new function is supported in the Storyteller chart only as a first stage. The controls for deriving the Top/Bottom best results can be found in the Settings tab. As the best result might be based on different series (e.g. brands in the examples above) the legend information needs to be defined, in the example above the series has been named to Best competitor.

The following steps needs to be defined during the setup:

1. Check the option “Show top X values”
2. Define the number for series
3. Define the legend information to each series

The image below shows the setup interface.



3 ACTION PLAN UPDATES

Two new settings have been added to the Action Plan module which makes it more flexible. For instance a new work process can be used where managers on a higher level create actions to managers on a lower level in the organization. The higher level manager creates the action and defines why an action needs to be done, the manager on the lower level fulfills the action and defines what needs to be done.

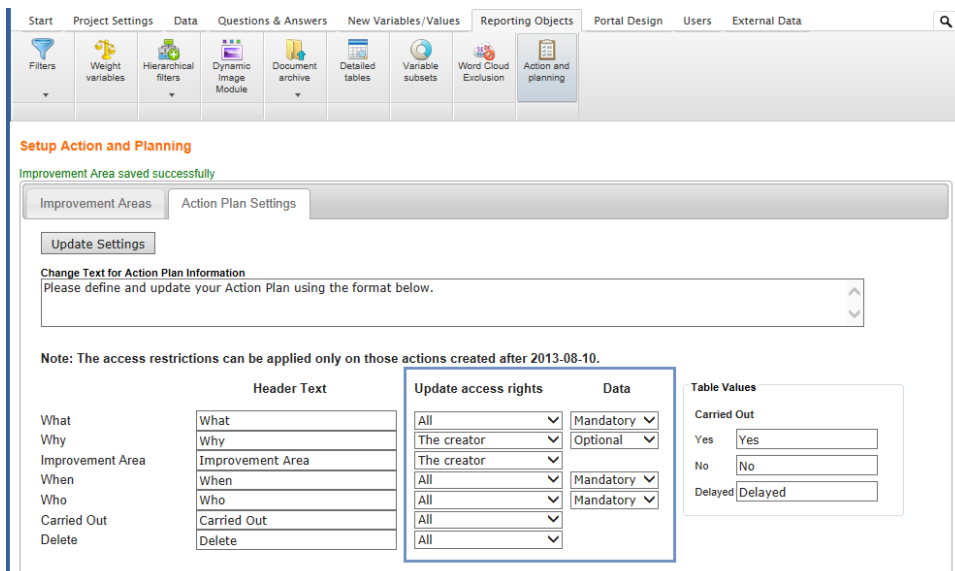
The following two new options have been added:

- A setting for defining who should have the access right to update the content (per column) in the Action Plan, the creator of the action or all users.
- A setting for defining if it should be mandatory or optional to enter content in a field.

3.1 SETUP

New settings are placed in the existing screen for defining the names of all ingoing columns in the Action Plan. As shown in the image below it is now possible to define who has access rights to edit the content/delete action. You can also define which columns are mandatory to fill in before you are able to save an action.

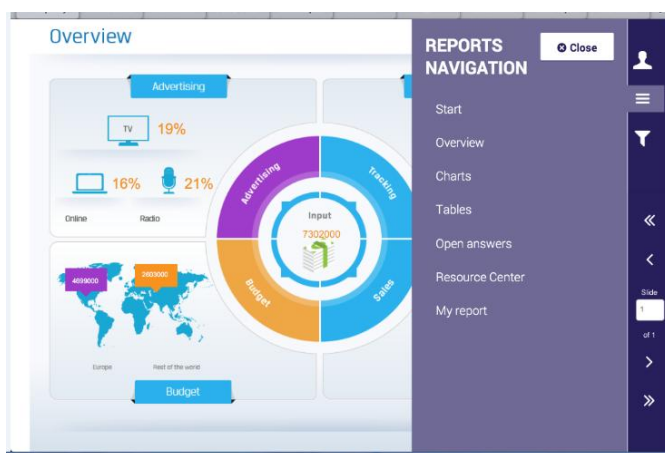
The image below shows the new controls in the Action Plan setup screen.



4 MOBILE DEVICES SUPPORT

Mobile devices support has been implemented in Dapresy Pro which makes it more user-friendly to use the reports in tablets. All existing report types are supported when using tablets but the main focus of the new development has been to implement a better user experience in the Storyteller report. The images below show how it could look like in tablet device.

The images below show how the navigation looks like in a tablet.



4.1.1 SETUP

To use a tablet layout in the project the used skin must be complemented with a Tablet skin. The Tablet skin defines the layout in tablets and the original skin defines the layout used online. So if a skin has been complemented with Tablet skin different layouts will be used online and in tablets.

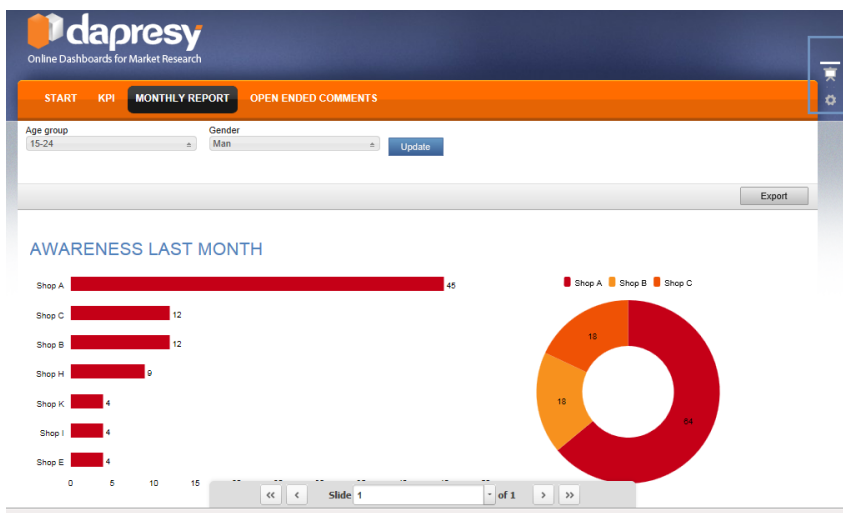
If you have a need for tablet skin please contact support@dapresy.com

5 GENERAL REPORT IMPROVEMENTS

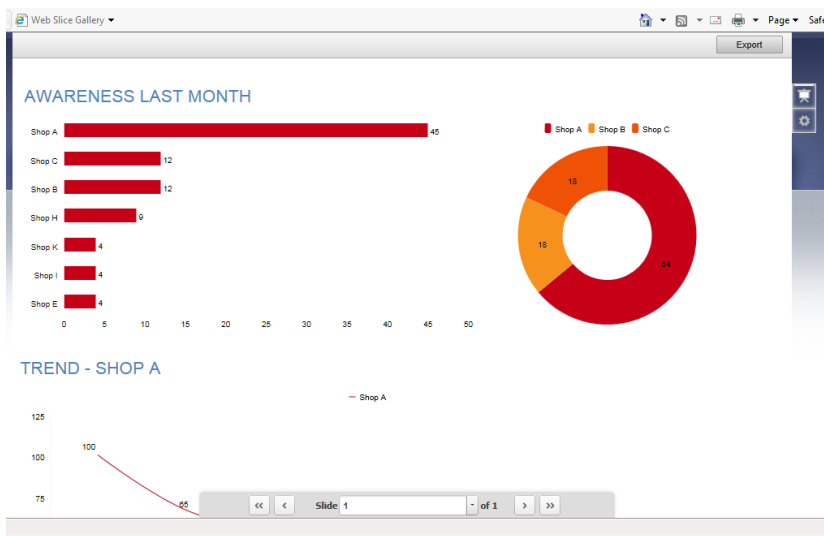
5.1 PRESENTATION MODE

A new presentation mode is now available in all report types. The new settings make it possible to hide the navigation tab in the portals while using the report, another setting makes it possible to hide the setting area (e.g. Optional Filter area in Storyteller reports). The new settings allow the viewers to focus on the shown report and not the elements outside the report page.

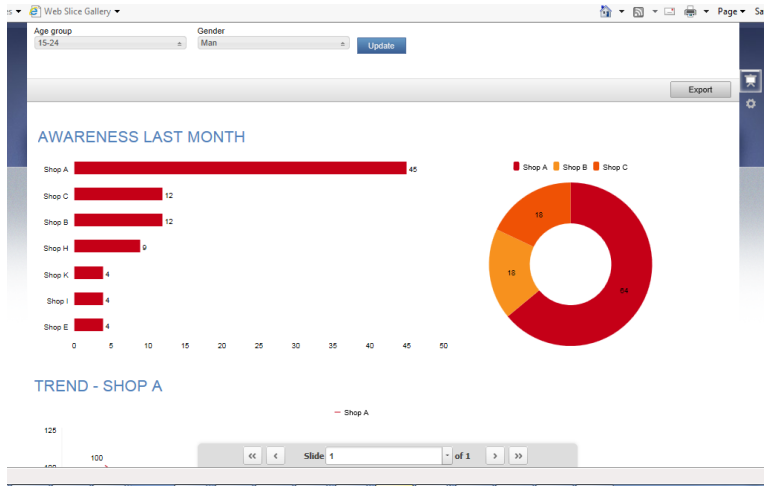
The image below shows the settings, one button is used for hiding the navigation bar and one for hiding the settings area.



In the image below the top navigation has been hidden.



In the image below the Optional Filter area has been hidden in a Storyteller report.



5.1.1 SETUP

The new controls for presentation mode appears automatically in all projects. If you have a need for removing those buttons from the project contact support@dapresy.com.

5.2 IMPROVED CULTURE SUPPORT IN CROSTABLE TOOL - DEFAULT SEPARATOR

A new setting makes it possible to define the default separator to use in the Excel exports from the Cross Table tool. The new setting allows each project to be more adapted to the culture of the destination country.

5.2.1 SETUP

The new setting is done on a project level and due to that placed in the Project settings page as shown in the image below.

The image below shows the new setting.

Project Settings

General | Custom CSS | Custom HTML | Custom Date Formats | Hide Controls

Save

Functionality

- Disable opening of static reports in Chart Creator
- Disable opening of static reports in Cross Table
- Use Hierarchical Filters Derive Hfilter structure from data Show as boxes in Chart creator and Cross table tool
- Allow Dynamic Data PowerPoint in Chart Creator and Static report

Max variables in storyteller (empty box or "0" means no limit): 2000

Default decimal separator in table tool: Comma (,) ▼

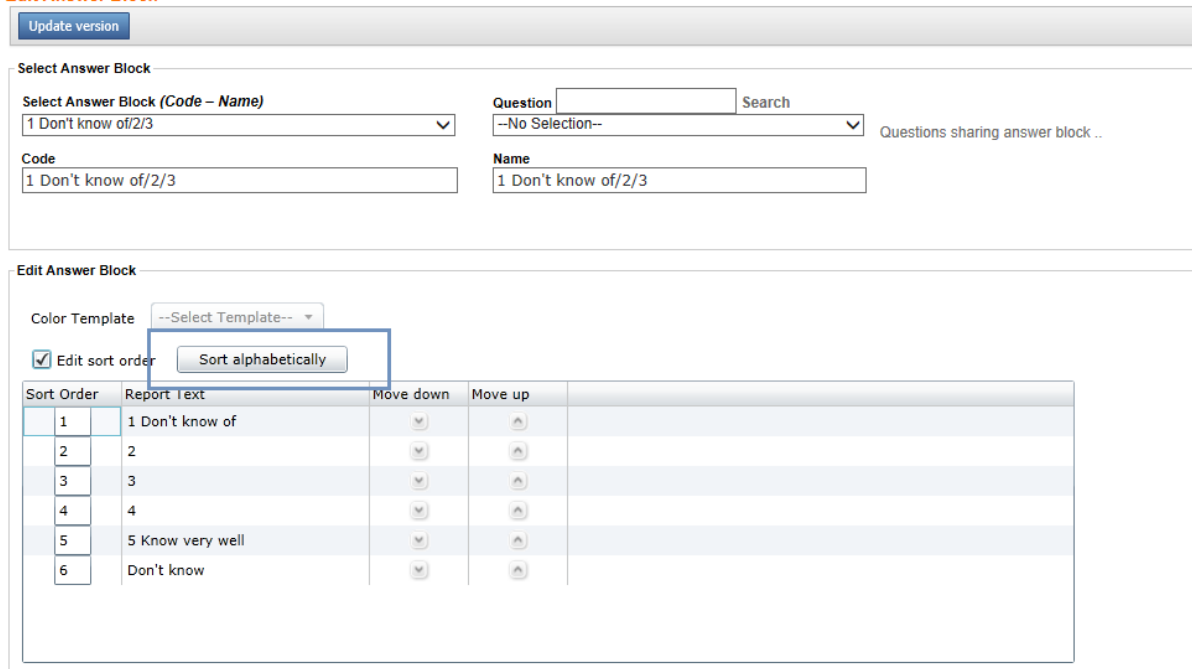
6 GENERAL ADMINISTRATION UPDATES

6.1 NEW IMPROVED SORTING IN ANSWER BLOCKS

In the Answer Block screen the sort order of all ingoing answer options is being defined. A new option allows the Administrator to sort all options alphabetically with a single click. This saves a lot of time when new answer options have been added or when the sort order was not alphabetically in the first meta data import.

The image below shows the new button for sorting the Answer block alphabetically.

Edit Answer Block



The screenshot shows the 'Edit Answer Block' interface. At the top, there is an 'Update version' button. Below it, the 'Select Answer Block' section includes a dropdown for 'Select Answer Block (Code - Name)' with '1 Don't know of/2/3' selected, a 'Question' dropdown with '--No Selection--', and a 'Search' field. There are also input fields for 'Code' and 'Name', both containing '1 Don't know of/2/3'. The 'Edit Answer Block' section below has a 'Color Template' dropdown set to '--Select Template--'. A checkbox labeled 'Edit sort order' is checked, and a 'Sort alphabetically' button is highlighted with a blue box. Below this is a table with columns for 'Sort Order', 'Report Text', 'Move down', and 'Move up'. The table contains six rows of answer options.

Sort Order	Report Text	Move down	Move up
1	1 Don't know of	⬇	⬆
2	2	⬇	⬆
3	3	⬇	⬆
4	4	⬇	⬆
5	5 Know very well	⬇	⬆
6	Don't know	⬇	⬆

6.2 TIME OUT SETTINGS – SUPPORT FOR INFINITE TIME LIMIT

The time out* time differs from 20 minutes to several hours depending on which install of Dapresy Pro you use. A new setting on a project level makes it now possible to change to an infinite limit.

The setting is done in the Project setting page as shown in the image below.

Project Settings

General Custom CSS Custom HTML Custom Date Formats Hide Controls

Save

Functionality

- Disable opening of static reports in Chart Creator
- Disable opening of static reports in Cross Table
- Use Hierarchical Filters Derive Hfilter structure from data Show as boxes in Chart creator and Cross table tool
- Allow Dynamic Data PowerPoint in Chart Creator and Static report

Max variables in storyteller (empty box or "0" means no limit):

Default decimal separator in table tool:

Low base warnings

"Base size warning"-text:

"Hide series with low base"-text:

Significance test visualization

Significant positive:

Significant negative:

Low base:

Session timeout

- Infinite timeout for reports

*When a logged in Report User has been inactive longer than the time out time he/she is getting logged out automatically for security reasons.